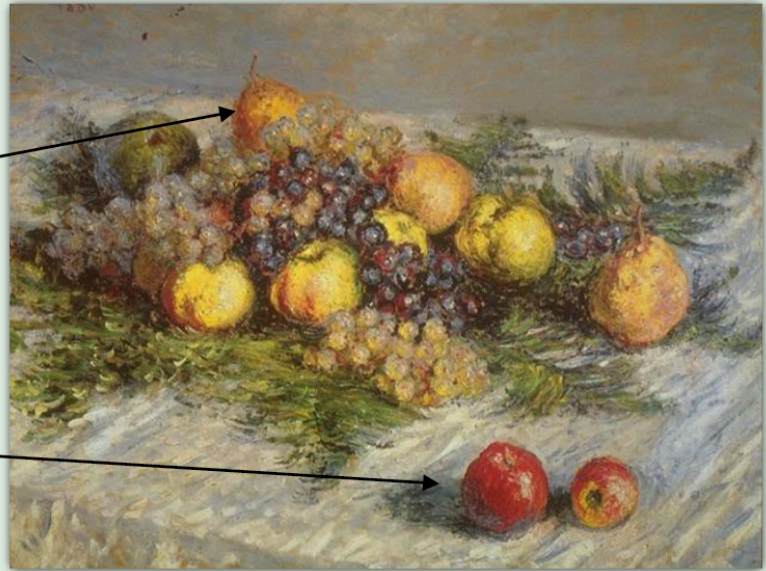


## B. LOOKING AT A PAINTING

The paintings below were done by a French artist named Claude Monet. What can we see about distance in space in these paintings from what we have learned?

Notice how the fruit that is **farthest away** is painted **highest** in the picture.

The fruit that is **closest** to us is painted **low** in the picture.



Claude Monet, *Still Life*, 1880



Claude Monet, *The Lunch*, 1873

The **house** is much higher in the painting than the **table**. Do you think the table is closer to us than the house?