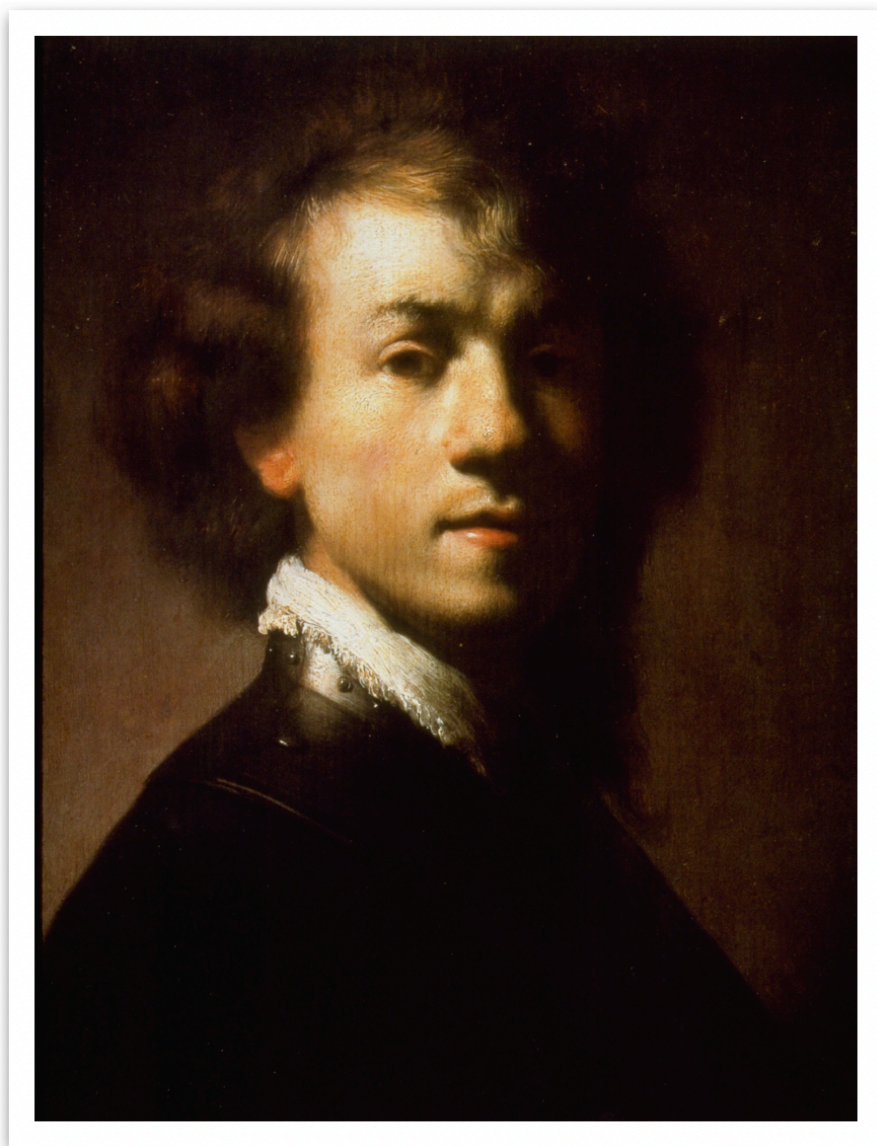


C. CONTRASTING BACKGROUNDS

Look at the painting below. Can you see how the artist created high contrast on one side of his face but very low contrast on the other? Do you think the sun was shining on one side?

Notice how the bright side of Rembrandt's face stands out as a focal point. Our eyes are drawn to his face because of the contrast between the light color of his face and collar and the dark color of the background in the painting.



Rembrandt, *Self-Portrait with Lace Collar*, 1628